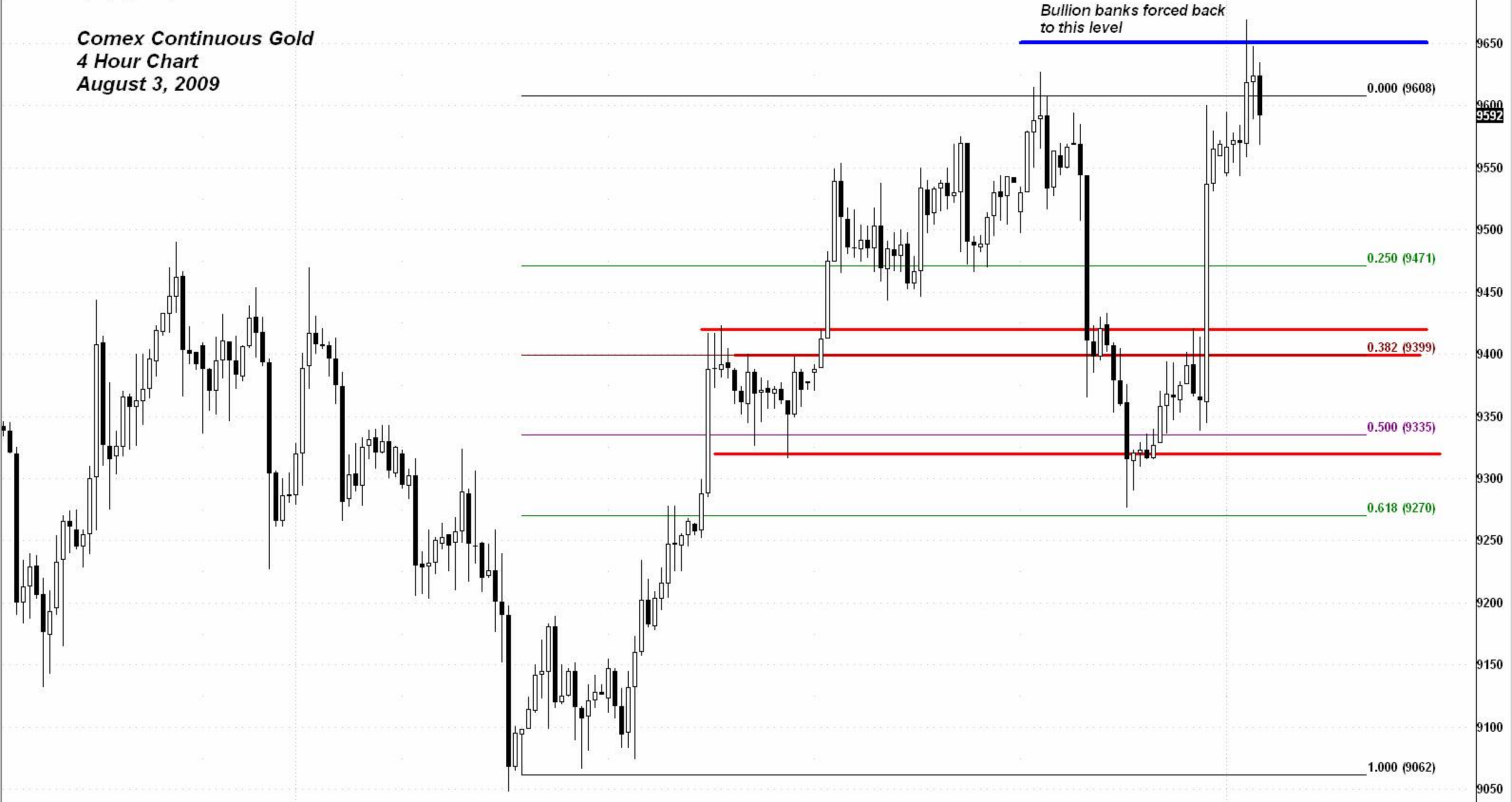


(GC #F - GOLD,240) Dynamic,0:00-24:00

**Comex Continuous Gold**  
**4 Hour Chart**  
**August 3, 2009**



*Bullion banks forced back to this level*

0.000 (9608)

0.250 (9471)

0.382 (9399)

0.500 (9335)

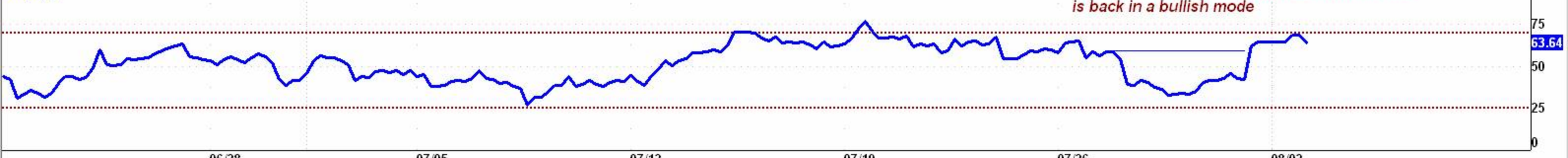
0.618 (9270)

1.000 (9062)

Copyright © 2007 eSignal.

RSI(18,C)

*The RSI has bettered its resistance levels and is back in a bullish mode*



63.64

06/28

07/05

07/12

07/19

07/26

08/02