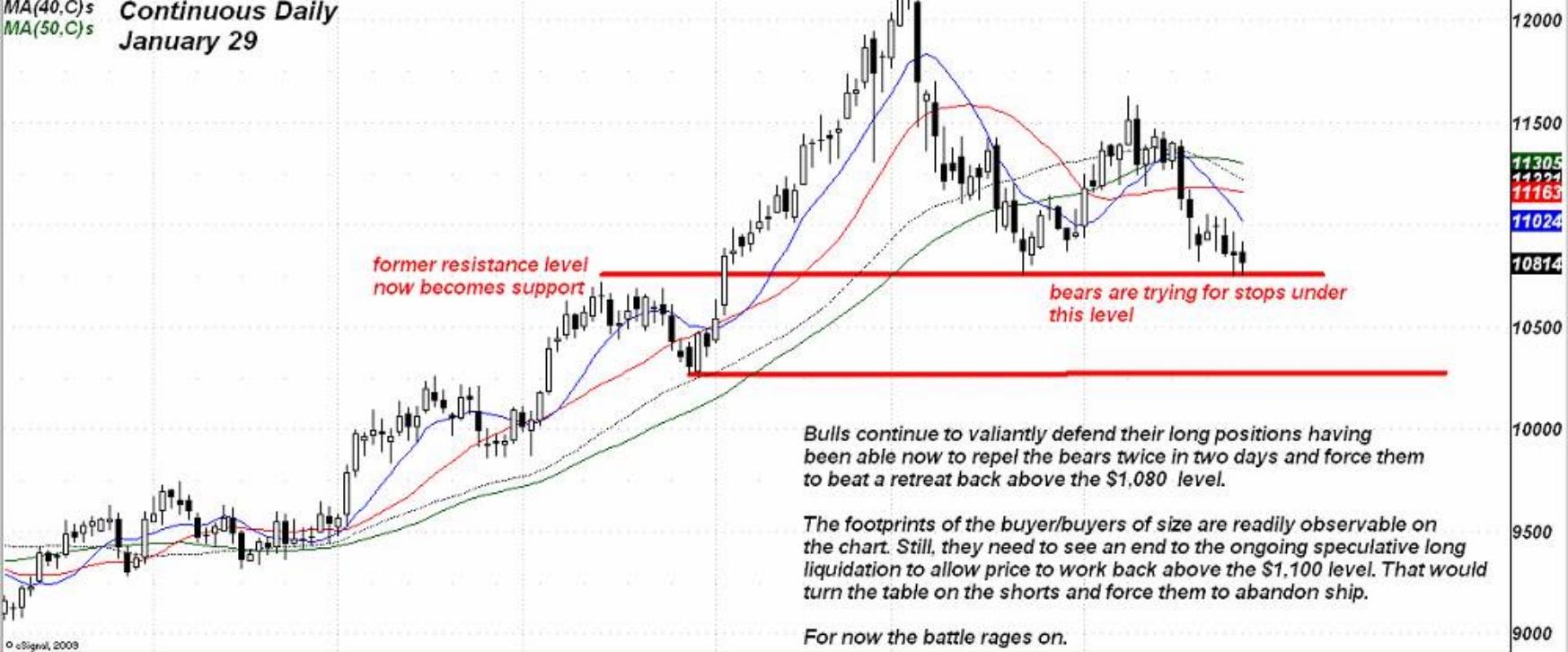


GC #F - GOLD.D) Dynamic,0:00-24:00
 MA(10,C)s
 MA(20,C)s
 MA(40,C)s
 MA(50,C)s
Comex Gold
Continuous Daily
January 29



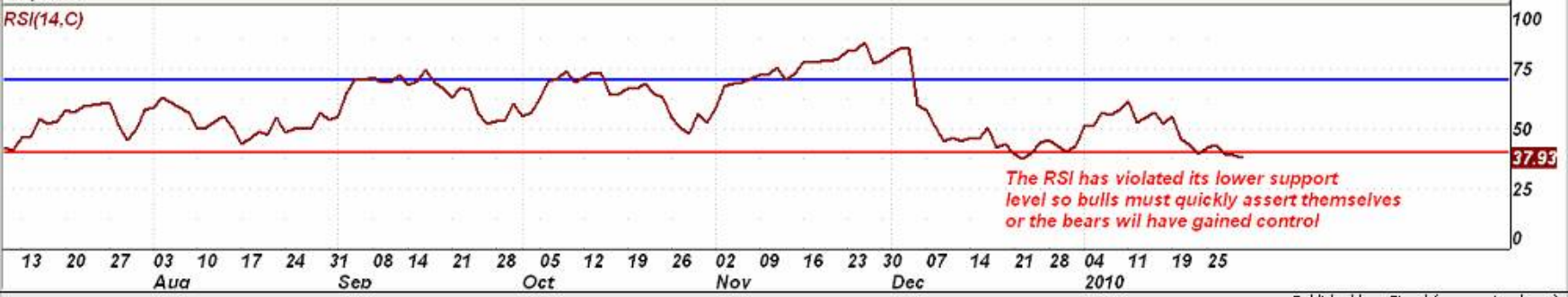
*former resistance level
now becomes support*

*bears are trying for stops under
this level*

Bulls continue to valiantly defend their long positions having been able now to repel the bears twice in two days and force them to beat a retreat back above the \$1,080 level.

The footprints of the buyer/buyers of size are readily observable on the chart. Still, they need to see an end to the ongoing speculative long liquidation to allow price to work back above the \$1,100 level. That would turn the table on the shorts and force them to abandon ship.

For now the battle rages on.



The RSI has violated its lower support level so bulls must quickly assert themselves or the bears will have gained control