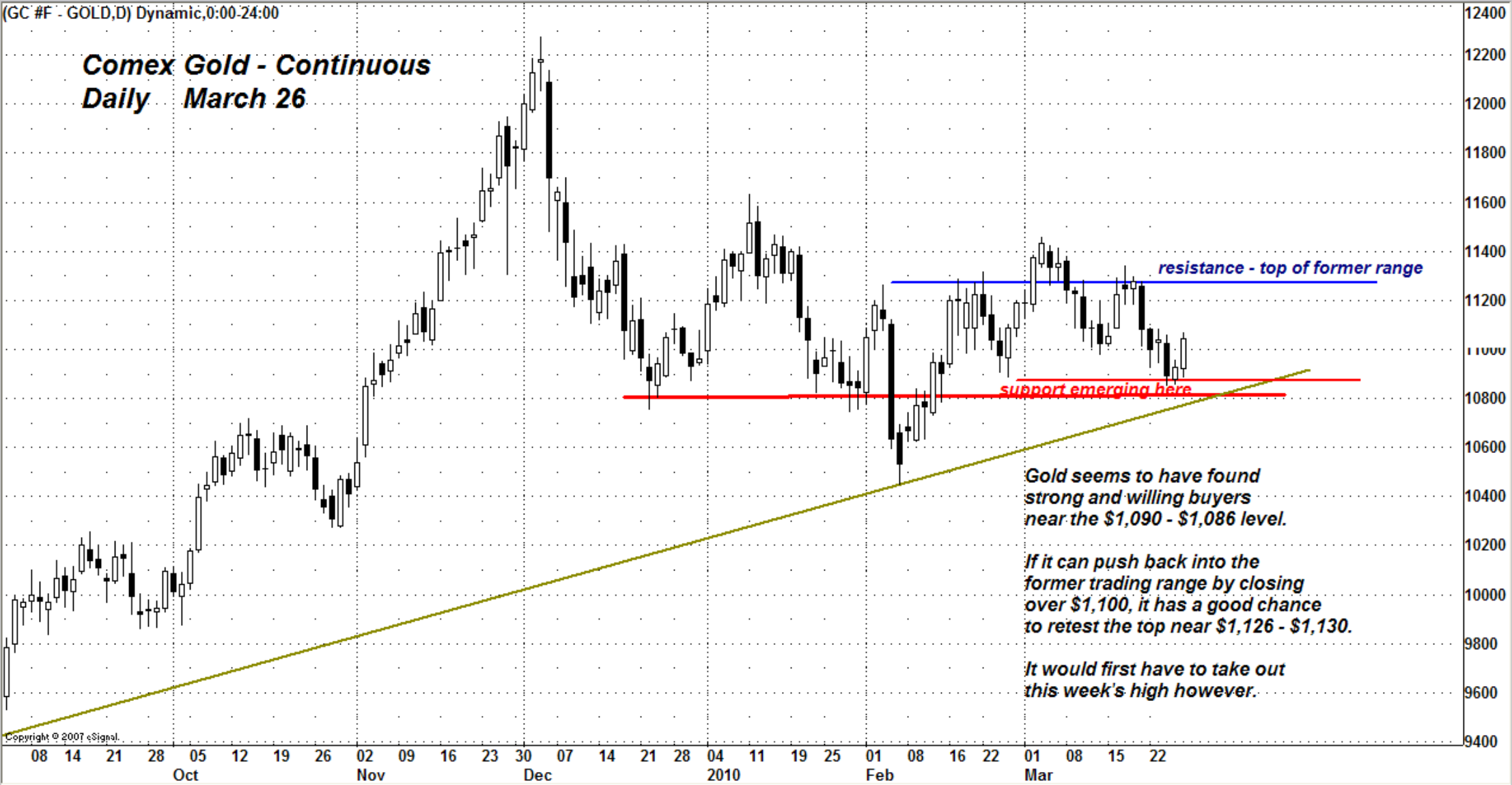


(GC #F - GOLD,D) Dynamic,0:00-24:00

Comex Gold - Continuous Daily March 26



Gold seems to have found strong and willing buyers near the \$1,090 - \$1,086 level.

If it can push back into the former trading range by closing over \$1,100, it has a good chance to retest the top near \$1,126 - \$1,130.

It would first have to take out this week's high however.