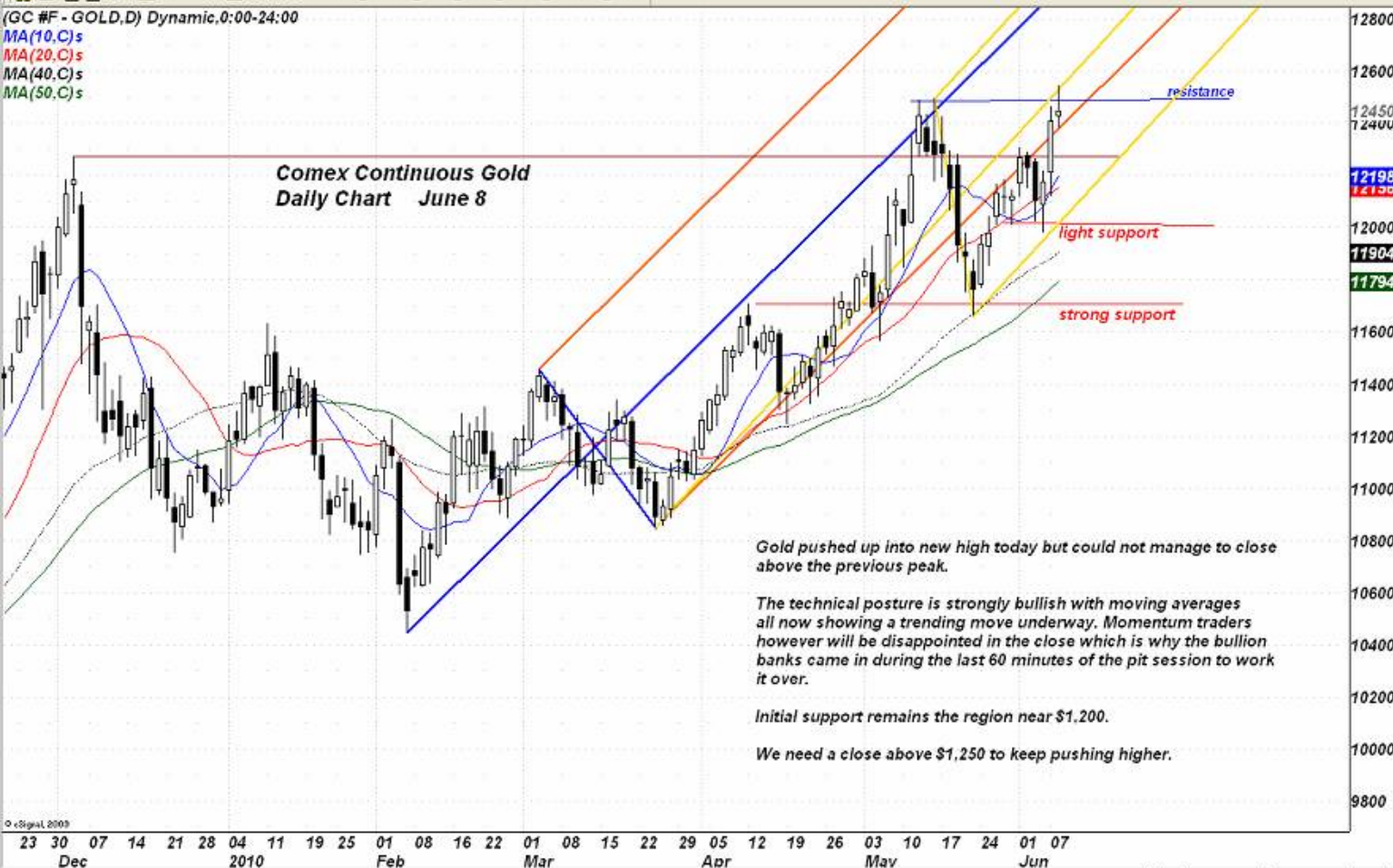


(GC #F - GOLD,D) Dynamic,0:00-24:00

MA(10,C)s
 MA(20,C)s
 MA(40,C)s
 MA(50,C)s

**Comex Continuous Gold
 Daily Chart June 8**



12800
 12600
 12450
 12400
 12198
 12100
 12000
 11904
 11794
 11600
 11400
 11200
 11000
 10800
 10600
 10400
 10200
 10000
 9800

Gold pushed up into new high today but could not manage to close above the previous peak.

The technical posture is strongly bullish with moving averages all now showing a trending move underway. Momentum traders however will be disappointed in the close which is why the bullion banks came in during the last 60 minutes of the pit session to work it over.

Initial support remains the region near \$1,200.

We need a close above \$1,250 to keep pushing higher.